



Your all-in-one smart leasing platform.



# Product Catalog

2025

1-888-340-6340 | [sales@rently.com](mailto:sales@rently.com) | [rently.com](https://rently.com)

# Your one-stop shop for all of your leasing needs.



Rently is the leader in property touring and smart home technology. We provide leasing automation solutions to help property managers lease faster, streamline operations, and increase NOI — with one log-in for one platform.

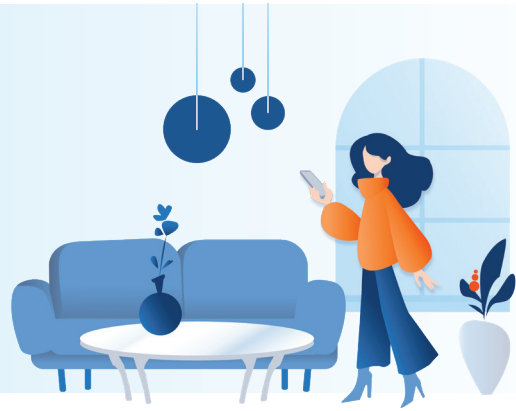
Whether you're seeking to increase security, reduce operating costs, or increase rental revenue, Rently has a tailored solution for you.

# CONTENTS

Tour Automation	4
Smart Home	6
Smart Management Platform	8
<b>HARDWARE</b>	
Rently Hub 4	11
<b>ACCESS CONTROL</b>	
Rently Access Panel with Intercom	12
Rently Smart Bolt	13
Kwikset Home Connect 620 Deadbolt	14
Yale Locks	15-19
Rently Self-Showing Lockbox	20
Ecolink Long Range Garage Controller	21
<b>SMART MONITORING</b>	
Rently Doorbell Camera	23
Rently Battery Doorbell Camera and Rently Tone	24-25
Rently Siren Alarm	26
Rently Motion Sensor 3	27
Rently Door & Window Sensor 2	28
Aeotec Door / Window Sensor	29
Aeotec Recessed Door Sensor 7	30
Uniview Security Cameras	31-33
<b>ENERGY MANAGEMENT</b>	
Honeywell T6 Pro Thermostat	35
Jasco Smart Lighting	36-39
Aeotec Z-Wave Range Extender 7	40
<b>DAMAGE PREVENTION</b>	
Rently Water Leak Sensor	42
Aeotec Z-Wave Water Sensor 7 Pro	43
FirstAlert Z-Wave Smoke and Carbon Monoxide Detector	44

# Tour Automation

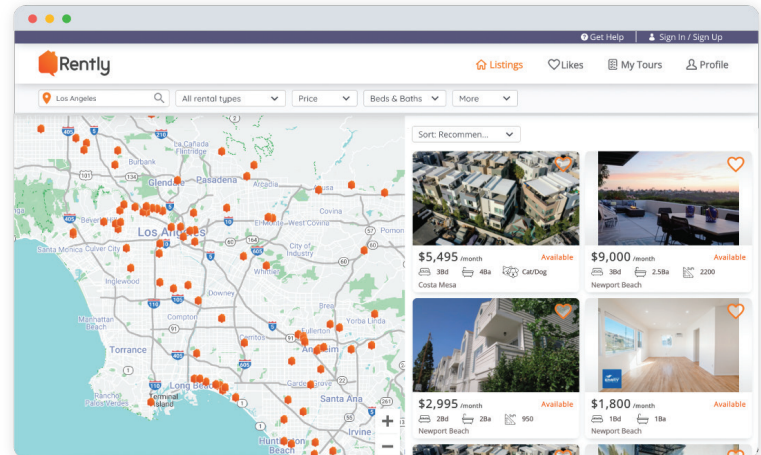
Our guided renter journey allows prospects to securely tour vacant units and shared amenities with or without the presence of an agent.



## Rently Listings

Our listing site [homes.rently.com](https://homes.rently.com) increases tours by 25% and receives more than 10 million visitors each year.

Rently also syndicates single family properties to the web's most popular listing sites.



## Self-Guided Touring



### Rently Tours

- Step 1:** Prospects find your listings online.
- Step 2:** Renters complete a multi-layer security process.
- Step 3:** At the door, renters enter a one-time, durational entry code into a smart lock or lockbox to begin their tour.
- Step 4:** Post-tour, renters provide feedback and are prompted to complete the property manager's online rental application.

#### DID YOU KNOW?

**42% of Renters** prefer to tour outside of regular business hours.

- Rently automatically responds to tour requests with a link to schedule a self-guided tour
- Prospective renters can access chat, email, and AI support while touring
- Multifamily managers can customize community access and parking instructions, and pin points of interest on their community map

## Advanced Security Tools

Rently takes a multi-layered approach to detect and deter rental fraud, including identity and location verification before every tour, renter scam education, and more.

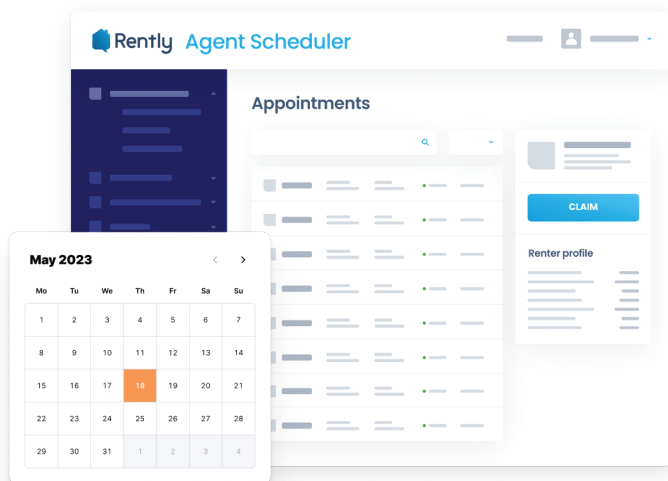


### Verified Renter

Our built-in lead verification service starts at the property search and helps you focus on quality leads, reducing scams by 35% on average.

### Fake Listing Monitoring

Rently partners with Property Shield to monitor, identify, and remove unauthorized listings from third-party websites and prevent scams.



## Agent Scheduler

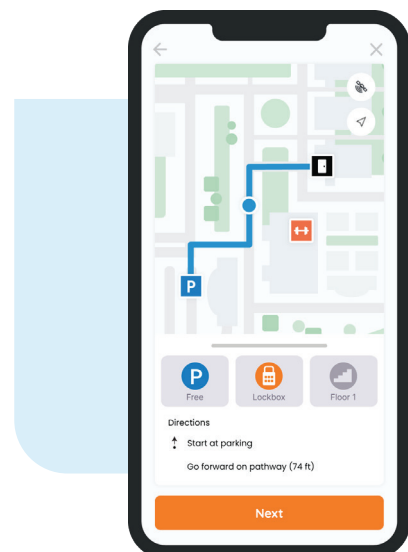
Offer your prospects multiple touring options: agent-led tours and self-guided tours. Our Agent Scheduler automates tour scheduling and follow-ups to capture more leads.

Rently integrates with your CRM calendar to show prospects your availability. We then post appointments to your calendar so all of your scheduled tours are visible in one place.

## Wayfinding

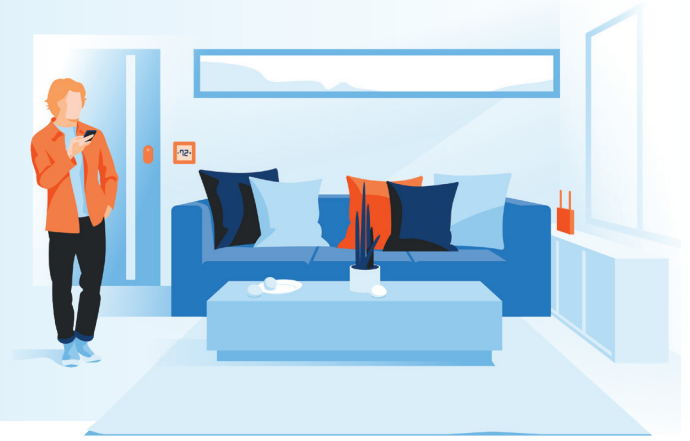
This unique multifamily feature uses GPS-style blue-dot mapping to guide prospects from the parking area to specific units and amenities within your community.

- Activate new units for self-guided tours within seconds
- Easily add/remove map pins to highlight community points of interest
- Provide the most-user friendly self-touring experience currently available



# Smart Home

From vacancy, through residency, to unit turnover, Rently's smart home solutions enhance all leasing activities for both renters and managers, while simplifying operations and increasing NOI.



- Increase resident satisfaction and retention
- Increase ancillary property revenue
- Improve security at each of your properties
- Decrease utility costs by 10-20%

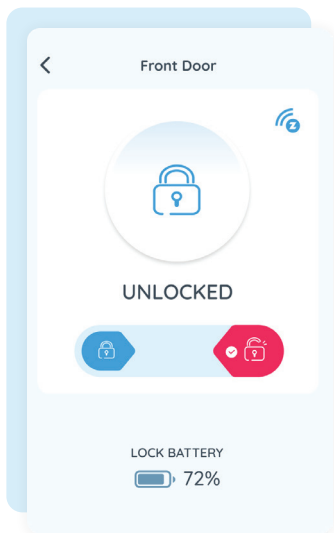
## Optimize Your Entire Leasing Lifecycle

**Vacancy:** Install smart devices for an added layer of security and reduce utility costs when your properties are vacant.

**Move-In:** Allow contactless turnovers with no key exchange.

**Leased:** Offer luxury amenities for residents, with full remote control capabilities.

**Move-Out:** Automatically revoke resident access and provide vendors with durational codes for make-ready projects.



## Access Control

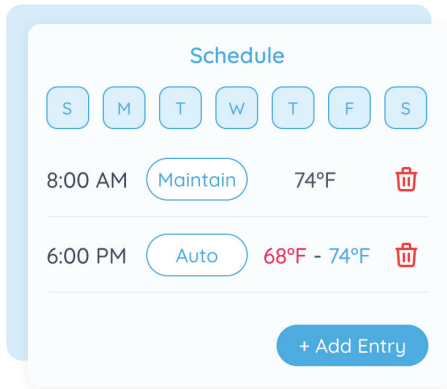
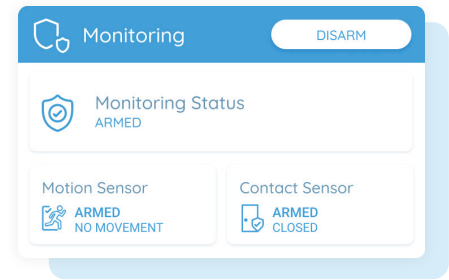
Remotely manage unit, amenity, and community access for self-guided tours, residents, and staff. Streamline property touring and enhance resident living.

## Common Area Access

Provide access for multiple users with multiple modes of entry, and view a complete activity log at any time. Create customized schedules with Passage Mode, and offer amenity reservations and community touring.

## Security Monitoring

Enable 24/7 property surveillance with real-time alerts to protect your properties. With perimeter cameras, doorbell cameras, motion sensors, and more, Rently has you covered.



## Energy Management

Monitor and control daily utility usage and HVAC performance to reduce costs and extend unit lifetime. Set schedules for thermostats and smart lighting scenes.

## Damage Prevention

Avoid unnecessary expenses with real-time alerts of potential threats to your properties. Detect leaks and smoke/CO before they become costly problems.

## Automated Work Orders

Managers quickly initiate work orders and assign technicians to respond to resident service requests.

Easily gather resident information regarding location, service issue, priority level, request dates, and pet presence.

- Empower leasing teams with fast-track responses to resident requests
- Expedite work orders
- Streamline maintenance workflows
- Enhance resident experiences

## Installer Workflow

Deploy confidently with Rently's streamlined installation workflow to accelerate the roll-out of smart home properties.

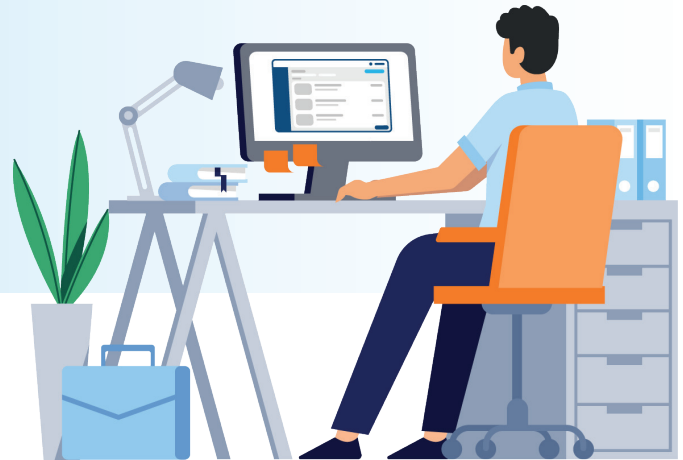
- Activates via Rently's Smart Home app
- Empowers technicians with step-by-step instructions
- Links to real-time technical support, if necessary
- Synchronizes communication between technicians and managers
- Eliminates frustrations and delays
- Provides visibility into device deployment status



# Smart Management Platform

We offer the ultimate, end-to-end solution to seamlessly manage every aspect of your leasing operations from one platform.

With the Rently Manager Portal and app, you can manage your tours, tenants, and devices for all of your properties.



## Remote Property Management

- Control multiple properties and devices with a single login
- Manage leads and view past and upcoming tour data in real-time
- Monitor tour status and device performance with our robust data dashboard



The dashboard features several key components:

- Lead Traffic Source:** A donut chart showing traffic distribution: 50% (orange), 30% (green), and 10% (blue).
- Total Showings:** A horizontal bar chart showing counts for Scheduled, Completed, No Show, and Cancelled.
- Property Listings:** A list of properties with details such as address, bedrooms/bathrooms, rent, and status. Example properties include:
  - 123 Main St. Los Angeles, CA 91111 (3 Bd, 3 Ba, 1,708 sq ft, \$1995/month)
  - 345 Main St. Los Angeles, CA 91111 (4 Bd, 3.5 Ba, 2,050 sq ft)
  - 6789 Main St. Los Angeles, CA 91111 (2 Bd, 1 Ba, 1,050 sq ft)
- Self Guided Tour:** A modal window for managing tours, showing details like Unit(s), Scheduled time, Status, Started, and Completed, with buttons for Reschedule and Cancel.
- Bottom Bar:** A navigation bar with icons for Home (Felix's Home), ID (021913), Occupied status, and device status (e.g., heating to 61).





# HARDWARE

## Features and Specifications

---

# Rently Hub 4

The fourth version of the Rently Hub features SmartStart and S2 Security support, and added compatibility with the Verizon network makes this device truly tri-carrier enabled.

## Compatibility



Compatible with all Z-Wave products. Contact customer support for specific product compatibility.



## Product Specifications

Product Measurements:	7 x 5.5 x 1.125"	Inputs:	Ethernet SIM card 5V DC = 2500mA
Warranty:	1 Year	CPU:	ARM Dual-Core Cortex-A7
Required Wireless Connection: (Only one connection required)	4G LTE Wi-Fi (802.11b/g/n) Ethernet (10/100M)	RAM:	1 GB
Supported Wireless Standards:	Z-Wave Z-Wave Plus Bluetooth (BT4.0) Wi-Fi	Cellular Module:	EG915Q-NA CAT-1
Number of Supported Devices:	Up to 232	Ethernet:	10/100M
Indoor Operating Environment: (Not suitable for outdoor use)	Temp: 0-60°C Humidity: up to 90%	Battery Backup:	Li-4 hours
Storage Environment:	Temp: -20-35°C Humidity: up to 50%	Mounting Bracket:	Yes
		Swappable SIM:	Yes
		AC Power:	5VDC/2.5A
		Wireless Updates:	Yes

# ACCESS CONTROL

Rently Access Panel with Intercom	12
Rently Smart Bolt	13
Kwikset Home Connect 620 Deadbolt	14
Yale Pro2 Deadbolt	15
Yale Assure Lock SL	16
Yale Assure Lock Interconnected	17
Yale nexTouch Cylindrical	18
Yale nexTouch Sectional Mortise	19
Rently Self-Showing Lockbox	20
Ecolink Long Range Garage Controller	21

# Rently Access Panel with Intercom

Rently's Access Panel with Intercom is the ultimate multi-function access control solution for shared spaces. It combines an E-Ink access control panel, credential reader/keypad, QR-code interaction for intercom communication, and a contact sensor—all with no hub required.



## Features

- Access via code, app, or fob
- Connect with Wi-Fi, cellular, or Ethernet
- Power-efficient, dynamic E-Ink display
- Simple setup—no hub required
- One/two-way video calling
- Define business hours restrictions and create a customized access schedule
- Activate passage mode to disable auto-lock during specific times
- Easily manage reservations for selected amenities
- Residents can reserve common areas directly from the smart home app



## Product Specifications

Dimensions:	8.39" x 4.13" x 1.22" (213 x 105 x 31mm)	Power Input:	12-24VDC or 12-24VAC, 24W min.
Weight:	845.5g (1.86lb)	RF Technology:	Bluetooth 4.0, NFC
Code and Fob Capacity:	2000	NFC Read Range:	0-10m
Connectivity:	Cellular, Ethernet or Wi-Fi 2.4GHz	Output:	One dry relay Normally Open / Normally Close
Operating Temp:	-35°C to 70°C (-31°F to 158°F) 95% humidity	Certifications:	UL294; IP65 for indoor or outdoor use

# Rently Smart Bolt

The next generation of Rently's Bluetooth-enabled deadbolt is the future of access control for rental homes, featuring increased security, durability, and battery life for worry-free property management and a smooth renter experience.



## Features

- Integrates with property management software (Yardi, RealPage, Entrata) for easy resident move-ins and move-outs
- Manage hundreds of locks using a single login
- Bluetooth and cloud-controlled with no need for Wi-Fi
- Easy to install, includes all required hardware
- Two-year battery life with jump-start ability to prevent lockouts
- Unlock via code, fob, or Bluetooth
- Residents can issue durational codes for their guests and easily manage their lock with Rently's Smart Home app

## Product Specifications

Dimensions:	Exterior: 8" x 5" x 3.25" Max Interior: 8" x 3.15" x 2.24" Flex Interior: 6.57" x 3.15" x 2.24"
Protocol:	Bluetooth BLE, NFC
Devices:	iOS and Android
Compatibility	1 3/8" to 1 3/4" door thickness
Handing:	Self-handing
Power:	4 or 8 AA batteries
Codes:	Supports up to 200 unique codes
Operating Temp:	Exterior: -30°C to 75°C Interior: 25°C to 70°C
Certifications:	FCC Part 15; IC; CA65; ANSI/BHMA 156.36 Grade 2



Smart Bolt Max  
(8-battery)



Smart Bolt Flex  
(4-battery)

# Kwikset Home Connect 620 Deadbolt

Keyed | Push Button

This Z-Wave 700 smart lock is a suitable replacement for your existing locks, offering premium protection and accessibility to your home. The Home Connect Smart Lock includes three methods to lock/unlock your front door: traditional turnkey, numeric passcodes, and remote access through the Rently Smart Home app.

## Features

- SmartKey® Re-Key Technology with BumpGuard™ Protection
- Comes with two keys
- Tapered deadbolt design permits misaligned doors to lock & unlock with ease
- Easily installs in minutes with just a screwdriver
- 10-digit keypad with one-touch locking
- Provides S2 Access Control security
- 128-bit Advanced Encryption Standard communication
- Incorrect code protection with audible alarm

### Contemporary



### Traditional



### Available Finishes:



Satin  
Nickel



Venetian  
Bronze



Matte  
Black



Polished  
Chrome

## Product Specifications

Door Prep:	Face Bore: 1 1/2" to 2 1/8" Latch Hole: 1" Backset: 2 3/8" or 2 3/4"	Bolt:	1" throw, steel deadbolt
Door Thickness:	1 3/8" to 1 3/4" automatic adjustment	Power Source:	6V (4 AA alkaline batteries)
Faceplate:	1" x 2 1/4" round corner	Cylinder:	SmartKey® Keyway
Strikes:	1 1/8" to 2 3/4" round corner	Wireless Protocol:	Z-Wave 908.42 MHz (U.S.)
Latch:	2 3/8" to 2 3/4" round corner	Handing:	Reversible
		ANSI/BHMA:	Grade 2

# Yale Pro2 Deadbolt

Keyed or Key-Free | Keypad or Touchscreen

This modern smart lock replaces your existing lock and deadbolt to add style, security, and peace of mind to your entry door. Forget carrying around keys; unlock your home using a 4-8 digit entry code or the Rently Smart Home app. Create unique entry codes to share with friends and family so you'll never have to lend a key.

## Features

- Z-Wave 700 support for wide compatibility
- Create/manage entry codes within the app
- Delete codes quickly
- Installs in minutes with just a screwdriver
- Never lose power, key free models can be energized with a 9V battery
- Rest easy knowing your door is locked when you want it to be with optional Auto-Lock

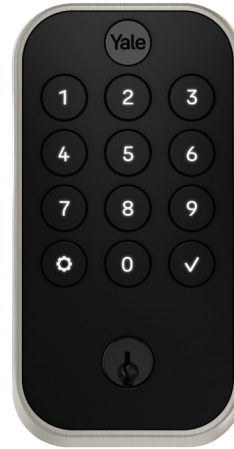
Available Finishes:



Satin Nickel



Oil-Rubbed Bronze



YRD614  
Keypad  
Pushbutton



YRD624  
Keypad  
Touchscreen



YRD634  
Key-Free  
Keypad Pushbutton



YRD654  
Key-Free  
Keypad Touchscreen

## Product Specifications

YRD614, YRD624 Dimensions: Exterior: 0.8" L x 2.6" W x 4.9" H  
Interior: 1.7" L x 2.7" W x 4.9" H

YRD634, YRD 654 Dimensions: Exterior: 0.6" L x 2.5" W x 3.7" H  
Interior: 1.7" L x 2.7" W x 4.9" H

Door Prep: Face Bore: 2 1/8" or 1 1/2"  
Edge Bore: 1"  
Backset: 2 3/8" or 2 3/4"

Door Thickness: 1 3/8" to 2 1/4"

Latchbolt Type: Round corner, adjustable

Handing: Self-handing (please hand while in unlocked position)

Power Source: 4 AA alkaline batteries

Keyway: KW-15 pin

Certifications: ANSI/BHMA Grade 2, 90 min fire rated, IPX5 rated

# Yale Pro SL

Key-Free | Keypad or Touchscreen

This electronic, motorized deadbolt features a slim design, while offering a pushbutton (YRD136) or a touch-capacitive (YRD156) keypad on the outside and a thumbturn on the inside. As a no-cylinder "key-free" model, the Yale Pro SL Z-Wave Plus Deadbolt prevents lock picking or bumping. By integrating this Z-Wave Plus lock into your network, you can make your home even smarter with wireless capabilities.

## Features

- Key-free lock eliminates risk of picking/bumping
- Lock/unlock via Z-Wave or numbered access code
- Remove individual codes whenever you need to
- Z-Wave Plus certified for wide compatibility
- Battery-powered with optional backup
- Voice assistance guides you through programming
- Weather-resistant keypad numbers won't wear off
- Give unique codes to friends and family



YRD136  
Key-Free  
Pushbutton



YRD156  
Key-Free  
Touchscreen



### Available Finishes:



Satin  
Nickel



Oil-Rubbed  
Bronze



Matte  
Black

## Product Specifications

Dimensions	Exterior: 1 1/16" x 2 9/19" x 3 9/16" Interior: 3 3/4" x 3 1/4" x 6 3/4"	Handing:	Self-handing (please hand while in unlocked position)
Door Prep:	Face Bore: 2 1/8" or 1 1/2" Edge Bore: 1" Backset: 2 3/8" or 2 3/4"	Power Source:	4 AA alkaline batteries
Door Thickness:	1 3/8" to 2 1/4"	Incompatible With:	Mortise Locks, Interconnected Locks, Rim Cylinder Locks
Latchbolt Type:	Round corner, adjustable	ANSI/BHMA:	A156.36 Grade 2



# Yale Assure Lock Interconnected

Key-Free | Touchscreen

Ideal for multifamily and single family residential use, this Z-Wave integrated lock from Yale offers a smooth, weather-resistant design and easy installation. The interior lever retracts the latch and deadbolt simultaneously for a quick exit while the motorized deadbolt ensures a secure lock every time.

## Features

- Available in 4" or 5 1/2" center-to-center\*
- Rubber gasket protects your door and shields your lock from weather elements
- Motorized, tapered deadbolt
- Solid metal escutcheon
- Privacy button prevents unwanted access from the outside at the touch of a button
- Keypad wakes with a touch
- Single point lock
- The latchbolt and deadbolt are operated by either lever at all times
- Deadbolt activated by keypad or key on outside, or by thumbturn on the inside
- The interior lever retracts the latch and deadbolt simultaneously



YRC652  
Key-Free  
Touchscreen

### Available Finishes:



Satin  
Nickel



Matte  
Black

## Product Specifications

Door Prep:	Face Bore: 2 1/8" Edge Bore: 1" 4" or 5 1/2" center-to-center
Door Thickness:	1 3/8" to 1 3/4"
Latch Faceplate:	1" W x 2 1/4" H; round corner
Backset:	2 3/8" or 2 3/4"
Strike:	1" x 2 1/4" (deadbolt) 2 1/4" (Lever)

Door Hanging:	Reversible
Keypad:	Touchscreen or pushbutton
Keying:	Key different
Power Source:	4 AA batteries
ANSI/BHMA Rating:	Grade 2 (Better)

\*Please anticipate a 6-week lead time for 4" center-to-center

# Yale nexTouch Cylindrical Deadbolt

Keyed | Pushbutton or Touchscreen

Add multiple secure means to enter your property with the Yale nexTouch Cylindrical Deadbolt (Key Override). This electronic cylindrical door lock gives you 3 ways to access your home: inputting a 4-8 digit code into the keypad, using a traditional key, or remotely accessing the lock via smartphone app. Available in pushbutton and touchscreen models.

## Features

- Integrates seamlessly with existing alarm and automation systems
- Wireless keypad lock secures your home and connects to Z-Wave networks
- Lock/unlock via numbered access code, turnkey, or app
- Create and share unique PIN codes for your family, friends, and delivery services.
- Easy to install, battery-powered with optional 9V backup
- Voice assistance guides you through programming in three languages
- Weather resistant seal protects the keypad from the elements
- Keypad lockout: disable the keypad after five successive failed attempts



NTB612  
Keypad  
Pushbutton



NTB622  
Keypad  
Touchscreen



Available in  
Satin Chrome

## Product Specifications

Door Prep:	Cross Bore: 2 1/8" Edge Bore: 1" Backset: 2 3/4" (70mm)
------------	---

Door Thickness:	1 3/4" (44mm); please inquire for other door thicknesses
-----------------	--

Handing:	Field reversible
----------	------------------

Latchbolt:	1/2" stainless steel throw
------------	----------------------------

Power Source:	4 AA alkaline batteries (optional hardwire input for 9V DC external power); 9V battery power backup
---------------	--

Approvals:	ADA, ANSI/BHMA Grade 1, EPD, FCC, GreenCircle, ISO 14001, Windstorm, UL/cUL rating up to and including 3 hours
------------	--

# Yale nexTouch Sectional Mortise

Keyed | Touchscreen | Cylinder Override

The nexTouch Sectional Mortise Keypad Lock provides robust security to any building. This mortise lock is great for multifamily and assisted living application. Available with or without deadbolt.

## Features

- Integrates seamlessly with existing alarm and automation systems
- Wireless latch bolt and keypad secure your home and connect to Z-Wave networks
- Lock/unlock via numbered access code, turnkey, or app
- Create and share unique PIN codes for your family, friends, and delivery services
- Easy to install, battery-powered with optional backup
- Voice assistance guides you through programming in three languages
- Weather resistant seal protects the keypad from the elements
- Keypad lockout: disable the keypad after five successive failed attempts



Available in  
Satin Chrome

## Product Specifications

Door Prep:

Face Bore: 2 1/8"  
Edge Bore: 1"  
Backset: 2 3/4"

Door Thickness:

1 3/4" Please inquire for other door thicknesses

Power Source:

4 AA alkaline batteries (optional hardwire input for 9V DC external power);  
9V battery power backup

Approvals:

ADA, ANSI/BHMA Grade 1, GreenCircle, EPD, FCC, ISO 14001, Windstorm, UL/cUL rating up to and including 3 hours

# Rently Self-Showing Lockbox

The most reliable and easiest-to-use lockbox available. Manufactured by SentiLock, this lockbox is the #1 electronic lockbox in the real estate industry. This all-in-one lockbox enables secure self-tours with flexible temporary access to rental properties when connected to Rently's Self-Guided Touring service.

## Features

- **Safe & Secure:** Designed to withstand just about anything, this lockbox maintains the highest security rating in the world
- **Latching System:** Patented latch immobilizer system prevents impacts from exterior blows and attacks from high strength magnets
- **Extra-Large Key Bin:** The clamshell design key bin stores larger keys, is pry-resistant, and opens fast
- **Illuminated Keypad:** Keypad lights up when activated for enhanced visibility during use
- **Industry-Leading Access Control:** Connected to Rently's Self-Guided Touring service for secure temporary access during self-tours
- **Longest Battery Life:** 4–5 year battery life, and batteries can be replaced in the field
- **Enhanced Physical Security & Durability:** Engineered with a high-strength corrosion-resistant steel vault and bolt-cutter-resistant shackle, this lockbox is built to last



## Product Specifications

Dimensions:	3.125" L x 2.5" W x 8.5"	Operating Temperature:	-30 °C to 66 °C
Shackle Clearance:	2.37"	Battery Life:	4-5 years
Weight:	2.5 lbs	Battery Type:	CR123A Lithium Battery
Protocol:	Access codes provided via Rently Self-Touring service after verifying user identity	Certifications:	UL 1037 Security Certification, CE, FCC, RoHS Compliance

# Ecolink Long Range Garage Controller

## Z-Wave 700

This garage door controller adds remote status and operating capability to most legacy garage door operators. The Controller is the first Z-Wave long-range product certified by the Z-Wave Alliance, providing up to 2200 feet of line-of-sight communications between the Controller and a paired Z-Wave long-range enabled panel or hub inside the home. The Controller is also compatible with classic Z-Wave 300, 500 and 700 series.



## Features

- Compatible with most legacy garage door operators including Chamberlain Security+ 1.0 and 2.0
- Provides up to 2200 feet line-of-sight between the controller and a compatible Z-Wave Long Range panel or hub
- Includes 345Mhz Clearsky® protocol tilt sensor
- UL325 Certified
- Easy to install and connect via traditional Z-Wave
- Provides both audible and flashing light warnings prior to door operation (open/close)

## Product Specifications

Controller Dimensions:	5" x 3.75" X 1"
Power:	12VDC, 1.0A
Operating Frequency:	345MHz, Z-Wave (908.42MHz, 916MHz), Z-Wave Long Range (912MHz, 920MHz)
Z-Wave LR transmission distance:	Up to 2200 ft line of sight
Operating Temperature:	-4° to 140°F

# SMART MONITORING

Rently Doorbell Camera	23
Rently Battery Doorbell Camera and Rently Tone	24
Rently Siren Alarm	26
Rently Motion Sensor 3	27
Rently Door & Window Sensor 2	28
Aeotec Door / Window Sensor	29
Aeotec Recessed Door Sensor 7	30
Uniview ColorHunter 8MP Turret Camera	31
Uniview License Plate Recognition (LPR) Camera	32
Uniview Plug & Play Network Video Recorder (NVR)	33

# Rently Doorbell Camera

The Rently Doorbell Camera provides enhanced security by connecting to the Rently Smart Home app, ensuring real-time updates. The video feed can be shared with family members who can also preview it online.



## Features

- HD video with night vision and local video storage
- Can be used to speak with people at the front door
- Ability to record video when doorbell detects motion
- Weather resistant
- Ability to brand doorbell

## Product Specifications

### General

Dimensions:	45 x 28 x 115mm
Operating Temp:	-20 °C to 50 °C
Power Supply:	AC12~24V, DC5V1A
Ingress Protection:	IP54
Storage:	SD card (Max.128G), cloud storage
Net Weight:	90g
WDR:	DWDR

### Network

Alarm Trigger:	Motion detection, button triggering
Comm. Protocol:	HTTP, DHCP, DNS, TCP/IP, RTSP
Interface Protocol:	Private
Wireless:	2.4G Wi-Fi (IEEE802.11b/g/n)
Mobile Phone OS:	iOS 9 or later, Android 5 or later
Security:	AES128

### Camera

Image Sensor:	1/2.9" 2 Megapixel CMOS
Effective Pixels:	1920(H) x 1080(V)
Shutter:	1/15~1/10,000s
Min. Illuminance:	Color 0.1Lux@F2.0 Black/White 0.01Lux@F2.0
IR Distance:	Night visibility up to 10m
Day/Night:	Auto(ICR)/Color/ B/W
WDR:	DWDR
Lens:	2.4mm@F2.0, 145°

### Audio and Video

Compression:	H.264/H.265
Bit Rate:	32Kbps~2Mbps
Audio Input/Output:	Built-in mic/speaker

# Rently Battery Doorbell Camera

The Rently Battery Doorbell Camera provides enhanced security by connecting to the Rently Smart Home app, ensuring real-time updates. With HD video, night vision, two-way voice communication, weather resistance, and local video storage, you'll always be up-to-date on property activity.



## Features

- 100% wire-free
- Rechargeable battery-powered
- PIR motion sensor for instant & accurate alerts
- Supports Android /iOS system mobile devices, for remote real-time monitoring
- Supports full duplex audio
- Supports micro SD card (max 128 GB) storage
- Low-battery notifications



## Rently Tone

DC (USB) powered wireless doorbell chime. Comes with the Rently Battery Doorbell Camera, or can be ordered separately.

## Features

- 4 ringtones to choose from
- Adjust volume via smartphone



## Rently Battery Doorbell Camera Specifications

### General

Dimensions:	57 x 41 x 145 mm
Net Weight:	200g
Operating Temp:	-20 °C to 50 °C
IP Rating:	IP65
Power Supply:	DC 5V/1A, AC 12~24V
Power Consumption:	Max. 2W
Accessory:	Rently Tone
Storage:	SD card (Max.128G), cloud storage

### Battery and PIR

Capacity:	6700mAh rechargeable Li batteries
Standby Current:	200-800 µA (average)
Working Current:	50-200 mA (IR off)
Standby Time:	10 months
Working Time:	3 months (wake up 10x per day)
PIR Detection Range:	Max. 5m
PIR Angle:	100°

### Audio and Video

Compression:	H.264
Bit Rate:	32Kbps~2Mbps
Frame Rate:	1~25fps
Dual Stream:	Yes
Audio Input/Output:	Built-in mic/speaker

### Camera

Image Sensor:	1/2.9" 2 Megapixel CMOS
Effective Pixels:	1920(H) x 1080(V)
Shutter:	1/15~1/10,000s
Min. Illumination:	Color 0.1Lux@F2.0 Black/White 0.01Lux@F2.0
IR Distance:	Night visibility up to 10m
Day/Night:	Auto(ICR)/Color/B&W
WDR:	DWDR
Lens:	3.2mm@F2.0, 106°/57°/130°

### Network

Alarm Trigger:	Button triggering, PIR detection
Wireless Protocol:	64/128-bit WPA/WPA2, WPA-PSK/WPA2-PSK, WPS
Comm. Protocol:	HTTP, DHCP, DNS, TCP/IP
Interface Protocol:	Private
Wireless:	2.4G Wi-Fi (IEEE802.11b/g/n)
Mobile Phone OS:	iOS 9 or later, Android 5 or later
Security:	AES128
Max. User Access:	4

## Rently Tone Specifications

Power:	DC 5V/1A
Reset:	Supported
Ringtone:	4 optional melodies
Volume:	Adjustable

Frequency:	433/868/915MHz
Transmission Range:	Max. 100m (no obstacle)
Dimensions:	60 x 24mm
Net Weight:	33g

# Rently Siren Alarm

The Siren works as a deterrent for any suspicious activity detected by your existing Rently sensors. Suitable for entrance door, windows, or within unit.



## Product Specifications

Wireless Distance:	50m outdoor; 30m indoor
Radio Frequency:	869.4MHz EU; 908.4 MHz US; 921.4MHz ANZ; 869.2MHz RU
Dimensions (DxWxH):	68mm x 68mm x 33mm
Net Weight:	48g/pcs
Power Specification:	CR123A-1500mAh x 2
Max Current:	35mA (radio transmitter mode); 500mA (siren on & max volume mode)
Stand-By Time:	1 year (alarm 1 time for 10sec daily)
Operating Temperature:	0°C~ 40°C (32°F~104°F)
Operating Humidity:	20% ~ 85% non-condensing
Storage Temp:	0°C ~ 60°C (32°F ~140°F)
Storage Humidity:	0% ~ 90% non-condensing
Sound Intensity:	>90 dB
Power Consumption:	2W
Certification:	CE, FCC, RoHS

## Features

- Alarm: up to 120 dB with flashing LED light
- 24/7 Monitoring: instant mobile phone alerts
- Easy installation with screws or stickers
- Timer Control: schedule siren to arm at desired times

# Rently Motion Sensor 3

Detect intruders and get real-time alerts sent directly to your smartphone. Receive notifications if any motion is detected outside of a self-guided tour and create monitoring schedules to stay aware of what's happening inside your home.



## Product Specifications

Network Range:	up to 100ft line of sight
Dimensions:	(DxWxH) 58 x 58 x 40mm
Weight:	40g
Battery Type:	CR123A 3V x1
Power Supply:	3V
Radio Frequency:	US: 908.4 MHz (40K) FSK 908.42 MHz (9.6K) FSK 916 MHz (100K) GFSK
RF Transmission Power:	Up to +14 dBm
Receiving Sensitivity:	-108.1 dBm @100kbps GFSK
RF Transmission Speed:	9.6K / 40K / 100K bps
Encryption:	AES-128
Standby Time:	1 year (alarm once for 10sec daily)
Detection Range:	7m
Radio Protocol:	Z-Wave™ (ZGM230S)
Operating Temp:	-10°C~ 40°C (14°F~104°F)

## Features

- Includes motion, temperature, humidity and light sensors
- 360° detection (suitable for ceiling fixture)
- Battery detection
- LED status indicator
- Easy installation

# Rently Door & Window Sensor 2

Contact sensors that notify you when an entrance has been opened or has been left open. Ideal for placement on doors or windows.



## Features

- Two statuses: open and closed
- Real-time alerts
- Compatible with Z-Wave 700 series
- Easily install with screws or stickers
- Red LED lights when triggered

## Product Specifications

Range:	Up to 45ft indoors Up to 80ft outdoors
Radio Frequency:	908.4MHz
Power Supply:	CR123 × 1
Standby Current:	1uA
Battery Life:	2 years
Operation Temperature:	0 °C – 70 °C
Size (LxWxH):	Main Body: 82mmx27mmx23mm; Deputy Body: 50mmx13mmx16mm

# Aeotec Door / Window Sensor

## Z-Wave Plus

The Aeotec Door / Window Sensor 7 is your first line of defense against an intruder. With Aeotec's patented Spatial Intrusion Algorithm™ built in and when paired with compatible software, the Door / Window Sensor 7 can even detect some break-ins before they happen.

## Features

- 3-in-1 MultiSensor: includes magnetic contact, dry contact relay, and a tilt sensor
- 40% smaller than previous generations
- 3+ year battery life powered by CR2 3V battery. Optimized to use up to 66% less battery power to communicate than previous generations
- Easy Installation: attach it to your door, and the Door / Window Sensor 7 is ready to protect your home



## Product Specifications

Model Number:	ZWA012	Operating Temp:	-4°F to 113°F
Product Dimensions:	19 x 71 x 18 mm	Water proofing:	IP20 rating
Magnate Dimensions:	8 x 20 x 11 mm	Power Source:	CR2 3V battery
Product Weight:	26 g	Battery Life:	Up to 3 years
Operating Distance:	Up to 150 meters outdoors Up to 492 feet outdoors	Frequency:	908.40 MHz, 916.00 MHz
		UPC/EAN:	810667025311

# Aeotec Recessed Door Sensor 7

## Z-Wave Plus

The Aeotec Recessed Door Sensor 7 is a hidden door sensor that you can install directly into your door frame. Comprised of two parts: the main Z-Wave door sensor and the magnetic door contact sensor. It can alert you the instant a door or window opens, and activate compatible sirens, cameras, and other security devices.

## Features

- Easy installation: pairing to the Rently Hub requires nothing more than scanning the QR code. To install, all you need is a hidden hole drilled in the door frame.
- Trigger smart automations or routines when your door is opened or closed.
- Comes with Z-Wave Security 2 (S2) framework, which is the most advanced security for smart home Z-Wave devices and controllers, Z-Wave gateway and Z-Wave hub.



## Product Specifications

Model Number:	ZW187	Standby Current:	10uA (paired), 50uA (unpaired)
Product Dimensions:	19.2 x 64 mm	Working Current:	30mA
Package Dimensions:	80 x 85 x 30 mm	Repeater:	No
Product Weight:	30 g	Power Source:	Lithium cell CR2 3-volt battery 800mAh
Operating Distance:	More than 131 ft indoors Up to 492 ft outdoors	Battery Life:	2 years
Frequency:	908.40 MHz, 916.00 MHz	Certifications:	US: FCC/ETL
Operating Temp:	32°F to 104°F (0°C to 40°C)	UPC/EAN:	810667025267

# Uniview ColorHunter 8MP Turret Camera



Strengthen security and create safer communities by installing security cameras throughout rental complexes. Uniview's 8MP turret camera is an indoor/outdoor perimeter camera that captures full color images, even at night.

## Features

- High quality image with 8MP, 1/1.8"CMOS sensor
- Smart intrusion prevention, include cross line, intrusion, enter area, leave area detection
- Based on target classification, smart intrusion prevention significantly reduces false alarms
- Intelligent People Flow Counting and Crowd Density Monitoring
- Alarm: 1 in/1 out, Audio: 1 in/1 out
- Supports 256GB micro SD card
- ColorHunter technology ensures 24-hour recording of full-color images
- IK10 vandal resistant and IP67 protection

## Product Specifications

Model Number:	IPC3638SE-ADF28KWL-I0	Operating Temp:	-22°F to 140°F
Product Dimensions:	Ø129 x 110mm (Ø5.1" x 4.3") (Ø x H)	Edge Storage:	Micro SD, up to 512 GB
Product Weight:	Weight 0.64kg (1.41lb)	Power Source:	DC 12V±25%, PoE (IEEE 802.3af)
Adjustment Angle:	Pan: 0° ~ 360°, Tilt: 0° ~ 72°, Rotate: 0° ~ 360°	Certifications:	CE, FCC, UL, RoHS, WEEE

[Click here to see additional specifications.](#)

# Uniview License Plate Recognition (LPR) Camera

Uniview's LPR camera can read an approaching or exiting vehicle's license plate, check to see if that plate number is listed as a valid resident, and automatically open a gate, providing security and convenience for your renters.



## Features

- Built-in lens supports motorized zoom to adapt to different scenes and allows for easy installation.
- Automatic gain control, white balance, and WDR for various light conditions.
- Supports triple streams.
- Advanced H.265 encoding technology improves compression efficiency.
- Built-in vehicle and license plate recognition algorithm can recognize standard license plates of multiple countries.
- Automatic network replenishment (ANR) allows to automatically store video to SD card in case of network disconnection.
- RTSP authentication prevents unauthorized video stream requests.

## Product Specifications

Model Number:	PKC2640@Z28-IR-P
Product Dimensions:	16" x 5" x 5.1" (LxWxH)
Product Weight:	4.6 lbs
Operating Temp:	-40°C to 60°C, ≤90% RH

Camera Sensor:	1/1.8-inch 4MP CMOS
Edge storage:	Micro SD card, up to 256GB
Mounting:	3-axis mounting bracket
Power Source:	DC12V + 25% - 10%

[Click here to see additional specifications.](#)



# Uniview Plug & Play Network Video Recorder (NVR)

Uniview's network video recorder (NVR) is a computer system that records audio and video footage from connected security cameras and stores it on a hard disk. It also features network adaptability, emergency recovery tools, and supports 8, 16, 32, or 64-channel inputs and independent PoE network interfaces.



## Features

- Supports Ultra 265/H.265/H.264 video formats
- Available in 8/16/32/64 channel inputs
- Plug & Play with 8 independent PoE network interfaces up to 820ft (250M)
- Configurable storage capacity: 8 SATA HDD up to 16TB for each HDD (16TB supports up to 83 days of continuous recording for up to 8 cameras), hard drive purchased separately
- Support mainstream cameras of ONVIF conformance(Profile S, Profile G, Profile T ) and RTSP protocols
- Support HDMI and VGA simultaneous output
- Up to 16 Megapixels resolution recording
- ANR technology to enhance the storage reliability when the network is disconnected

## Product Specifications

Model Numbers:	NVR502-08B-P8, NVR502-16B-P16, NVR502-32B-P16, NVR508-64E-R	Product Weight:	NVR502: 4.4 lbs NVR508: 12.1 lbs
Product Dimensions:	NVR502: 12.4" D x 15" W x 2.1" H NVR508: 17" D x 17.4" W x 3.4" H	Operating Temp:	14°F to 131°F
		Power Supply:	AC 100 to 240 V
		Certifications:	CE, FCC, UL, RoHS, WEEE

[Click here to see additional specifications.](#)

# ENERGY MANAGEMENT

Honeywell T6 Pro Thermostat	35
Enbrighten/JASCO Plug-In Smart Switch	36
Jasco Smart Switches	37
Jasco Smart Dimmers	40
Jasco Add-On Switches	41
Aeotec Z-Wave Range Extender 7	42

# Honeywell T6 Pro Thermostat

A Z-Wave Plus certified thermostat that can be remotely controlled via the Rently Smart Home App for easy programming and automation to deliver energy savings and comfort. Operators can gain insight into HVAC performance, extend the life of their HVAC, and save on utility costs by setting custom schedules.

## Features

- Compatible with most HVAC systems
- Set up custom heating and cooling schedules from the Rently Smart Home app for each hour or day of the week
- You can display ambient air temperature or % relative indoor humidity, or see whether your cooling/heating system is running
- When Auto mode is selected, the T6 Pro Z-Wave thermostat can automatically determine whether your home needs heating or cooling to reach the desired temperature at the right time
- The T6 Pro Z-Wave thermostat can alert you when your HVAC system is not working properly and can remind you about things like when to change your furnace filter
- Adaptive Intelligent Recovery: the T6 Pro Z-Wave thermostat learns your heating and cooling cycle times to make sure the system delivers the temperature you want, when you want it. (Available only if the local thermostat schedule is enabled)



## Product Specifications

Model Number:	TH6320ZW2007
Stages:	Up to 3 heat, 2 cool heat pump Up to 2 heat, 2 cool conventional
Battery Power:	3 AA alkaline batteries
C-Wire Input:	18-30VAC; 50HZ-60HZ
Dimensions:	4.09" x 4.09" x 1.06"
Display Size:	6.55 sq. in.
Adjustable Heat Temp:	40-90°F (4.5-32.0°C)
Adjustable Cool Temp:	50-99°F (10.0-37.0°C)
Operating Temperature:	37-102°F (2.78-38.89°C)
Operating Humidity:	5% to 90% (non-condensing)
Temp. Sensor Accuracy:	± 1.5°F at 70°F (0.85°C at 21.0°C)
Frequency:	908.42 MHz
Node Type (C-wire):	Always On Slave (AOS)
Node Type (Battery)	Listening Sleeping Slave (LSS)
Z-Wave Chipset:	ZM5202AU

# Enbrighten/JASCO Plug-In Smart Switch

## Z-Wave

Expand your control with the GE-branded Enbrighten Z-Wave Plus Plug-in Smart Switch. When paired with the Rently Hub, the smart switch operates lighting, fans, pumps and more through individual commands and programmed settings. Wirelessly control and schedule indoor fixtures for effortless management of your home.



## Features

- Control the device remotely with your Rently Smart Home app and voice commands, or enjoy manual ON/OFF operation from the switch. Home automation is simple through custom scenes, versatile scheduling and convenient alerts
- Space-saving design leaves lower outlet in a duplex receptacle free for continued use
- Plugs and cords for connected devices route to the side, allowing the device to easily fit behind furniture
- Grounded 3-wire power connection for safety
- No wiring required. Simply plug in the device and connect to your hub for convenient ON/OFF functions
- Works with all LED, CFL, incandescent and halogen bulbs as well as other devices

## Product Specifications

Power:	120VAC, 60Hz
Signal Frequency:	908.4/916MHz
Maximum Load:	960W Incandescent, 1/2 HP Motor 1800W (15A Resistive)
Wireless Range:	Up to 150 feet line of sight between the wireless controller and the closest Z-Wave receiver module
Operating Temperature:	32° to 104°F (0° to 40°C)
Approvals:	FCC, IC

# Jasco In-Wall Smart Switch Paddle

Z-Wave | Model: 76596

This hardwired smart switch operates wall, ceiling and accent lighting through individual commands and programmed settings. Wirelessly control and schedule indoor or outdoor fixtures for effortless management of your home.



- Multi-switch compatible: The smart device operates on its own or seamlessly integrates into multi-switch setups
- Range extender: repeats the signal from your hub or other Z-Wave device to extend wireless range by up to 150ft

## Product Specifications

Power:	120VAC, 60Hz	Wireless Range:	Up to 150 feet line of sight between the wireless controller and the closest Z-Wave receiver module
Signal Frequency:	908.4/916MHz	Operating Temperature:	32° to 104°F (0° to 40°C)
Maximum Load:	960W Incandescent, 1/2 HP Motor 1800W (15A Resistive)	Approvals:	FCC, IC

# Jasco In-Wall Smart Switch Toggle

Z-Wave | Model: 76598

Adds Z-Wave on/off remote control and local control of wired lights or appliances. The toggle switch can be included in multiple automation groups or scenes and a blue LED indicator helps guide you to the switch through the dark.



- Dual ground ports are offset to avoid switch box mounting screws, and support daisy-chaining in multi-switch setups
- Can be linked with add-on switches for up to 6-way operation. Not a standalone device

## Product Specifications

Power:	120 VAC, 60Hz	Wireless Range:	Up to 150 feet line of sight between the wireless controller and the closest Z-Wave receiver module
Signal Frequency:	908.4/916MHz	Operating Temperature:	32° to 104°F (0° to 40°C)
Load Ratings:	960W Incandescent; 1800W (15A) Resistive or 1/2 HP Motor	Approvals:	FCC, IC

# Jasco In-Wall Smart Dimmer Paddle

Z-Wave | Model: 59383

A hardwired smart dimmer that operates wall, ceiling, and accent lighting through individual commands and programmed settings. The dimmer adjusts brightness levels of dimmable LED, CFL, incandescent and halogen lights from 0-100 percent to reduce energy costs and improve bulb life.



- QuickFit design features 20% smaller depth compared to previous models, and eliminates the need for heat tabs
- SimpleWire: Auto-detecting line/load terminals support fast installation by identifying line and load wires and configuring the switch accordingly
- Multi-switch compatible

# Jasco In-Wall Smart Dimmer Toggle

Z-Wave | Model: 59384

The Jasco Z-Wave Plus In-Wall Smart Toggle Dimmer Switch adds Z-Wave remote and local On/Off/Dim/Brighten control for a wired light or appliance. The dimmer toggle switch can be installed in single or multi-way wire applications and included in multiple automation scenes. A blue LED indicator leads you to the switch in the dark.



- Works with dimmable incandescent, LED, CFL, and halogen lighting
- Suitable for single-pole or multi-pole applications
- Can be included in multiple automated groups or scenes
- For indoor use only

## Jasco In-Wall Smart Dimmer Specifications

Power: 120 VAC, 60Hz

Signal Frequency: 908.4/916MHz

Maximum Load: 960W Incandescent, 1/2 HP Motor 1800W (15A Resistive)

Neutral Wire Required: Yes

Wireless Range: Up to 150 feet line of sight between the wireless controller and the closest Z-Wave receiver module

Operating Temperature: 32° to 104°F (0° to 40°C)

Approvals: FCC, IC

# Jasco In-Wall Add-On Switch Paddle

Z-Wave | Model: 76600

Create a 3-way or 4-way switch by combining this auxiliary switch with a main Jasco light switch. When used in conjunction, these auxiliary switches allow you to control one load with multiple switches, up to 6-way operations. Ideal for hallways, staircases, or other areas where multiple switches would add convenience.



- Supports up to 6-way wiring configurations
- Requires wiring connections: neutral, traveler and ground
- Includes interchangeable paddles
- SimpleWire: Auto-detecting line/load terminals support fast installation by identifying line and load wires and configuring the switch accordingly

# Jasco In-Wall Add-On Switch Toggle

Z-Wave | Model: 59380

Create a multi-way lighting group by pairing this toggle switch with a main Jasco Z-Wave light switch. This Z-Wave auxiliary toggle switch allows you to wire multiple switches to a single electrical load. Ideal for large indoor areas including hallways, staircases, or other areas.



- Works with dimmable incandescent, LED, CFL, and halogen lighting
- Supports 2, 3, 4, 5, or 6-way wiring configurations
- Suitable for single-pole or multi-pole applications
- Can be included in multiple automated groups or scenes

## Jasco Add-On Switch Specifications

Power:	120-277VAC, 60Hz	Maximum traveler wire distance:	300ft, interconnected between 4 Add-On switches; No more than 75ft between each switch
Operating Temperature:	32° to 104°F (0° to 40°C)	Maximum traveler wire distance between primary and (1) Add-On switch:	200ft
Maximum Load:	960W Incandescent, 1/2 HP Motor 1800W (15A Resistive)	Approvals:	UL Listed
Neutral Wire Required:	Yes		

# Aeotec Z-Wave Range Extender 7

Amplify all Z-Wave signals within your Z-Wave network with the Aeotec Z-Wave Range Extender 7. This wireless repeater improves the signal strength of Z-Wave networks by passing along commands from transmitters and controllers to their intended recipient, providing sufficient signal strength over long distances and large homes. The repeater's small size prevents it from covering up adjacent outlets, so you can boost your network without sacrificing a second plug.



## Features

- Plugs into a standard power outlet
- **250% further wireless range:** amplifies and repeats weak signals boosting the range and reliability of weak Z-Wave/Z-Wave Plus devices
- **50% faster communication:** built upon Aeotec's unique Gen7 hardware and firmware stack, allowing stable performance and seamless automation
- **Security 2 System compatible:** can amplify and repeat signals from security focused devices, including door locks and smoke sensors
- **Z-Wave Plus certified:** compatible with all new and old generations of Z-Wave technology

## Product Specifications

Model Number:	ZW189-A01	Relative Humidity:	8% to 80%
Product Dimensions:	53.2 x 46 x 40 mm	Operating Temp:	32°F to 104°F (0°C to 40°C)
Package Dimensions:	76 x 68 x 58 mm	Beaming Capable:	Yes
Product Weight:	38 g	Security Supported:	S2 Unauthenticated, S2 Authenticated
Total Package Weight:	66 g	UPC/EAN:	810667025274
Operating Distance:	Over 70 m (229 ft) indoors Up to 150 m (492 ft) outdoors		
Power Consumption:	0.6W		



# DAMAGE PREVENTION

Rently Water Leak Sensor	42
Aeotec Z-Wave Water Sensor 7 Pro	43
FirstAlert CO/Smoke Detector	44

# Rently Water Leak Sensor

A compact, battery-powered leak sensor that detects leaks via built-in and wired probes and sends alerts to the Rently Smart Home app. The unit may be deployed as a freestanding sensor (using built-in probes) or as a wired remote sensor (via the wall mount/wired probe assembly).



## Features

- Instant detection of water leaks and real-time notifications sent directly to your smart device
- Compatible with the Rently Hub
- Z-Wave S2 for improved security
- Supports Smart Inclusion
- Battery powered, no wiring required
- Low battery alert
- Can be used to trigger home automation events or other Z-Wave devices such as sirens
- Screw anchor mount



## Product Specifications

Size (D x W x H):	68mmx68mmx34mm
Battery:	1 x CR2
Operation temperature:	0-40°C
Radio frequency:	908.4MHz

# Aeotec Z-Wave Water Sensor 7 Pro

A 3-in-1 multi-sensor that's your first line of defense against expensive leaks, drips, pipe bursts, and floods. Monitoring more than just the presence of liquid, Water Sensor 7 Pro can also monitor the absence of water. When used to monitor tanks or pits, Water Sensor 7 Pro can alert you when water levels get too low and can also trigger automation routines.



## Features

- Wireless and battery powered: installation is as easy as sticking it to a surface
- The stainless-steel detection-tip can detect as little as 0.5mm / 0.02" of liquid on a surface
- Can instruct water valves to automatically close and alert you to overflows
- When water levels are detected to be too high or low, turn on electronic pumps or sump pumps and run them for a defined period or until the desirable water level is reached

## Product Specifications

Product Weight:	42 g
Product Dimensions:	70 x 13 x 20 mm
Wire Length:	1.1 m
Operating Distance:	More than 164 feet indoors Up to 492 feet outdoors.
Operating Temperature:	32°F to 113°F / 0°C to 45°C.
Battery Type:	1x CR2 3.0V
Battery Life:	Up to 3 Years
Max Current Consumption:	5mW
Water Sensor:	Detects as little as 0.02" of liquid and upwards
Temperature Sensor:	Measures between 14°F and 149°F with as little as ±1.8°F of variance
Humidity Sensor:	Monitor between 0% and 80% with as little as ±3% of variance

# FirstAlert CO/Smoke Detector

2-in-1 Smoke/Fire & Carbon Monoxide Alarm: The First Alert ZCOMBO alarm features a photoelectric sensor that detects the smoke most commonly produced by smoldering fires, providing sensitive detection while minimizing false alarms. The advanced electrochemical CO sensor detects carbon monoxide. Unique alarm sounds and indicator lights on the face of the detector distinguish a smoke warning from a carbon monoxide warning.

## Features

- **Battery-Operated for Convenience:** The battery-operated combination smoke and CO alarm installs in minutes. The detector requires two AA batteries, and features a chirp and indicator light to let you know when they need replacing
- **Easy Installation:** The alarm mounts easily to a ceiling or wall, and comes with pins to secure the alarm to the base to prevent tampering
- **Mobile Alerts for Peace of Mind:** The integrated wireless alarm system sends you mobile alerts, so you're aware of dangers after the alarm is activated, whether you're home or away
- **Test & Silence Button:** For efficient testing



## Product Specifications

Dimensions:	(LxWxH) 5" x 5" x 2"
Model:	ZCOMBO
UPC:	029054011381
Power:	2 AA batteries
Sensor Type:	Electrochemical, Photoelectric
Weight:	0.7 lb
Certifications:	UL217 and UL2034



1-888-340-6340 | [sales@rently.com](mailto:sales@rently.com) | [www.rently.com](http://www.rently.com)